



I. Driver Features

1. Command Format

This device is controlled through a combination of RS-232 and IR commands; both are necessary for full control of the device.

2. RS-232 Commands

IR Commands

Power On	Volume Up	Menu	Keystone Up
Power Off	Volume Down	Adj Up	Keystone Down
Source: Video	Pic Mute On	Adj Down	Magnify Up
Source: S-Video	Pic Mute Off	Adj Left	Magnify Down
Source: RGB 1	Sound Mute On	Adj Right	Freeze
Source: RGB 2	Sound Mute Off	Select	
Source: Input Select	On Screen Mute On	Cancel	
	On Screen Mute Off	Auto Adjust	

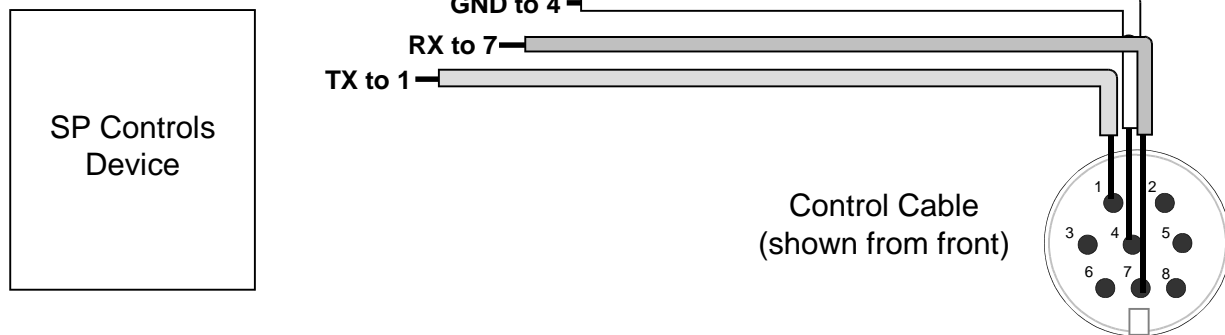
3. Other Driver Features

Default Power Status Feedback: None
 Projector Restart Lockout Timer (Default): 120 Seconds

II. RS-232 Control Wiring

For IR wiring, see product manual for the SP Controls device.

Wire RS-232 control to a male mini-DIN as follows:



Connect male mini-DIN to projector port labeled *PC Control*.
 Serial Adapters (for NRC only): N/A

III. Projector Configuration

The NEC LT265 projector will not power off during the first 80 seconds after it is powered on, even with its own set-top buttons. Do not attempt to turn it off during the first 80 seconds or while the control system indicates the projector is in warmup mode.

If you have any questions, please contact SP Controls Technical Support.